

# Reach the peak

**The Albrecht Micro.  
Made for the  
smallest and finest  
surfaces. Range  
1 - 6 Millimeter.**

ALBRECHT  
GERMANY

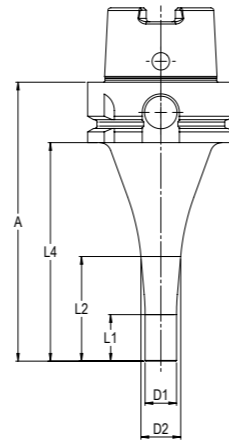
Ideal for microtools.  
Clamping range 1 - 6 mm.  
Peripheral or internal cooling.  
Significantly better dampening  
in comparison to Shrink Chucks.  
Slim shape  $D1=13,5$  mm.  
Perfect runout  $\leq 3 \mu\text{m } 2,5xD$ .  
Up to 40.000 1/min  $\leq 1$  gmm.

For the finest surfaces even for  
difficulty accessible areas.  
Special coated collets.  
Maintenance-free.  
The Albrecht Micro.  
None is more fine.

# HSK

## Micro-Precision-Chuck, DIN ISO 12164 (DIN 69893)

Easy exchange of tools by setting of hex-key (see page 55). Maintenance free. Sealed against coolant and contamination. Slow collet taper angle. Collet with special coating (see page 54). System-Runout-Accuracy 3 µm at 2,5 x D. Clamping of tool shanks according to DIN 1835 A, B and DIN 6535 HB, HA as well as HE up to D = 6 mm.



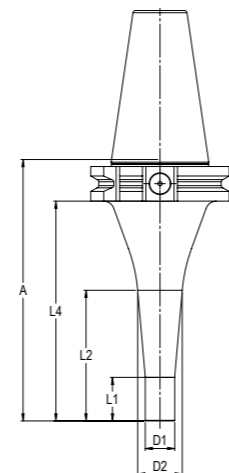
HSK 50-A <span style="float: right;">1 – 6 mm</span>									
A	Part.No.	Form	L1	L2	L4	D1	D2	Balanced	kg
75	310 1006 640 1	A	20	35	55	13,5	16	<1gmm	0,3
HSK 50-A									
85	310 1006 650 1	A	20	34	59	13,5	16	<1gmm	0,5
120	310 2006 650 1	A	20	45	94	13,5	18	<1gmm	0,7
HSK 63-A									
90	310 1006 663 1	A	20	30	64	13,5	15	20.000 G=2,5	0,8
120	310 2006 663 1	A	20	45	94	13,5	17	20.000 G=2,5	1,0
160	310 3006 663 1	A	20	70	134	13,5	22	20.000 G=2,5	1,2
HSK 40-E									
75	310 10E6 640 1	E	20	35	55	13,5	16	<1gmm	0,3
HSK 50-E									
85	310 10E6 650 1	E	20	40	59	13,5	17	<1gmm	0,5
120	310 20E6 650 1	E	20	45	94	13,5	18	<1gmm	0,7



# SK

## Micro-Precision-Chuck, DIN ISO 7388-1 (DIN 69871)

Easy exchange of tools by setting of hex-key (see page 55). Maintenance free. Sealed against coolant and contamination. Slow collet taper angle. Collet with special coating (see page 54). System-Runout-Accuracy 3 µm at 2,5 x D. Clamping of tool shanks according to DIN 1835 A, B and DIN 6535 HB, HA as well as HE up to D = 6 mm.



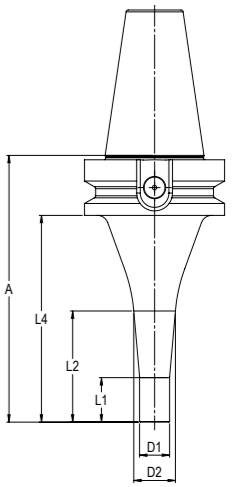
SK 30 <span style="float: right;">1 – 6 mm</span>									
A	Part.No.	Form	L1	L2	L4	D1	D2	Balanced	kg
75	310 2006 230 1	A/AD	20	32	56	13,5	16	<1gmm	0,5
SK 40									
90	310 1006 240 1	A/AD	20	38	71	13,5	17	20.000 G=2,5	1,0
120	310 2006 240 1	A/AD	20	60	101	13,5	21	20.000 G=2,5	1,2
160	310 3006 240 1	A/AD	20	75	141	13,5	23	20.000 G=2,5	1,2



# MAS-BT

## Micro-Precision-Chuck, DIN ISO 7388-2 (JIS B 6339)

Easy exchange of tools by setting of hex-key (see page 55). Maintenance free. Sealed against coolant and contamination. Slow collet taper angle. Collet with special coating (see page 54). System-Runout-Accuracy 3 µm at 2,5 x D. Clamping of tool shanks according to DIN 1835 A, B and DIN 6535 HB, HA as well as HE up to D = 6 mm.



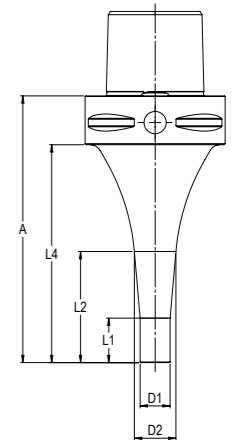
BT 30 <span style="float: right;">1 – 6 mm</span>									
A	Part.No.	Form	L1	L2	L4	D1	D2	Balanced	kg
75	310 2006 430 1	A/AD	20	30	53	13,5	15	<1gmm	0,5
BT 40									
90	310 1006 440 1	A/AD	20	30	63	13,5	15	20.000 G=2,5	1,2
120	310 2006 440 1	A/AD	20	50	93	13,5	19	20.000 G=2,5	1,3
160	310 3006 440 1	A/AD	20	70	133	13,5	22	20.000 G=2,5	1,3



# Polygon

## Micro-Precision-Chuck, DIN ISO 26623-1

Easy exchange of tools by setting of hex-key (see page 55). Maintenance free. Sealed against coolant and contamination. Slow collet taper angle. Collet with special coating (see page 54). System-Runout-Accuracy 3 µm at 2,5 x D. Clamping of tool shanks according to DIN 1835 A, B and DIN 6535 HB, HA as well as HE up to D = 6 mm.



PSC 40 <span style="float: right;">1 – 6 mm</span>									
A	Part.No.	Form	L1	L2	L4	D1	D2	Balanced	kg
75	310 1006 9C4 1	A	20	35	55	13,5	16	<1gmm	0,3
PSC 63									
90	310 1006 9C6 1	A	20	30	68	13,5	15	20.000 G=2,5	1,0
120	310 2006 9C6 1	A	20	50	98	13,5	19	20.000 G=2,5	1,1



# Micro-ER Chucks

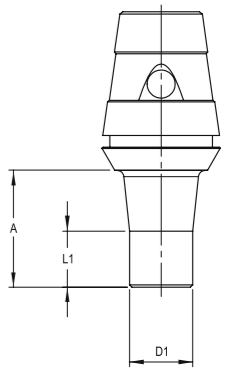
Micro-ER Chuck, for Collet-Chucks according to DIN ISO 15488

Increases the access for Micro-tools. Universal use, fits in all ER-chucks and nuts. ER20, 25 and 32. Range 1,0 – 6,0 mm. Same collets like extensions (AMC). Optional Internal- or Peripheral-Coolant supply. Better dampening in comparison to Shrinking Chucks – curve design. Slim Shape D1=13,5 mm. Perfect Runout and Clamping like Shrinking Chucks. Balanced by design.

# ER

## Micro-ER-Chuck, for Collet-Chucks according to DIN ISO 15488

Easy exchange of tools by setting of hex-key (see page 55). Maintenance free. Sealed against coolant and contamination. Slow collet taper angle. Collet with special coating (see page 54). System-Runout-Accuracy 3 µm at 2,5 x D. Clamping of tool shanks according to DIN 1835 A, B and DIN 6535 HB, HA as well as HE up to D = 6 mm.



### ER 20

1 – 6 mm

A	Part.No.	Coolant	L1	D1	Balanced	kg
28	310 1006 320 1	Central	28	13,5	by design	0,1
35	310 2006 320 1	Central	35	13,5	by design	0,1

### ER 25

25	310 1006 325 1	Central	12	13,5	by design	0,1
40	310 2006 325 1	Central	15	13,5	by design	0,1
50	310 3006 325 1	Central	20	13,5	by design	0,1

### ER 32

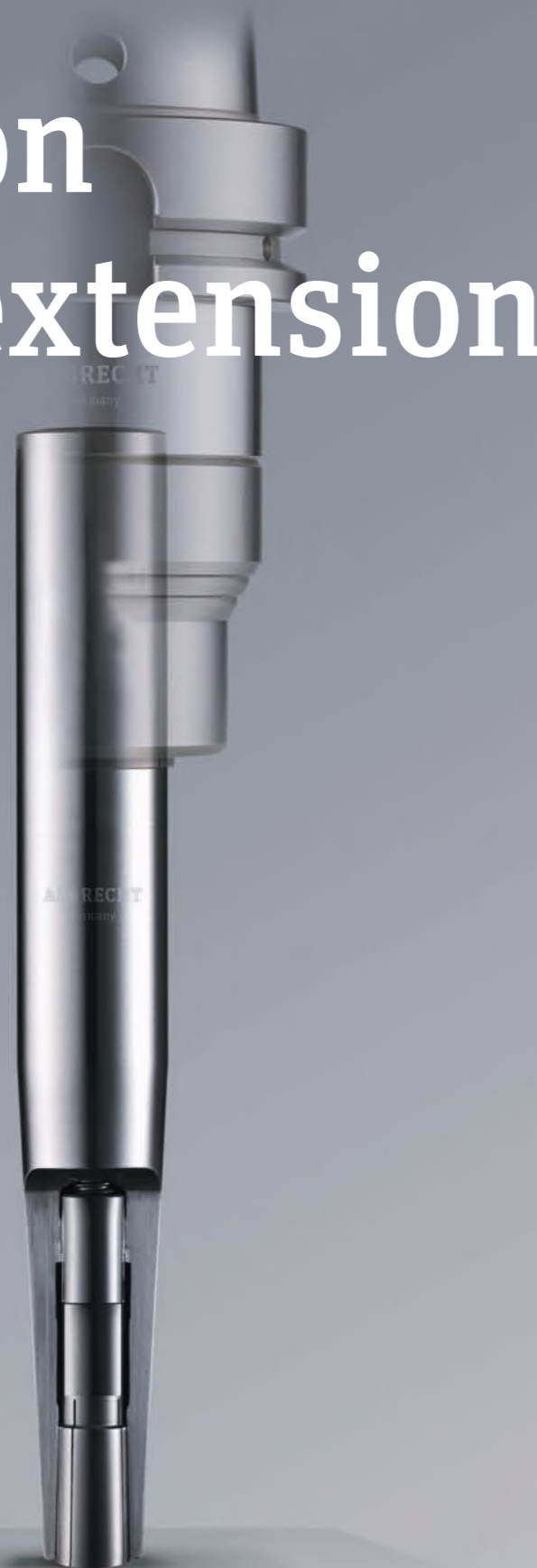
25	310 1006 332 1	Central	12	13,5	by design	0,2
40	310 2006 332 1	Central	15	13,5	by design	0,2
50	310 3006 332 1	Central	20	13,5	by design	0,2



# Precision Chuck extension

## For extension of Precision Chucks

Very slim design for operation areas which are not easy to access. High Gripping torque due to slow angle taper. Runout accuracy 8 µm. Clamping of tool shanks according to DIN 1835 A, B and DIN 6535 HB, HA, HE. Special coated collets. Maintenance free. Operated from behind with included hex-key.



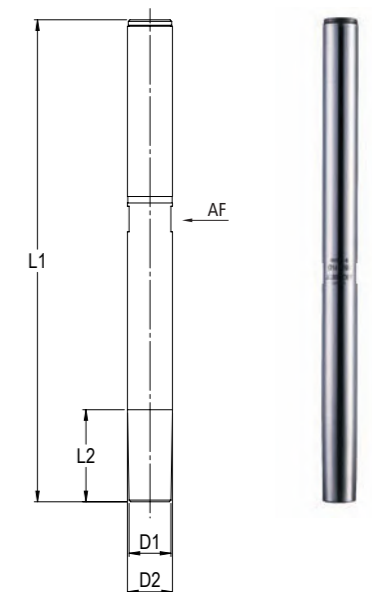
# Chuck extension

Easy exchange of tools by setting of hex-key (scope of delivery). Maintenance free. Sealed against coolant and contamination. Slow collet taper angle. Collet with special coating (see page 55). Clamping of tool shanks according to DIN 1835 A, B and DIN 6535 HB, HA as well as HE up to D = 6 mm.

## Cylindrical shank 14 mm

1 – 6 mm

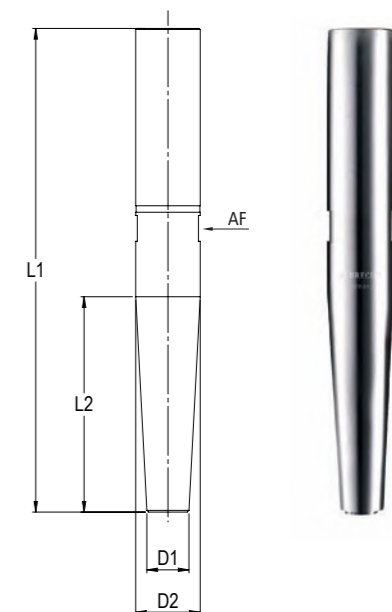
L1	Part.No.	Coolant	L2	D1	D2	AF	kg
100	310 1006 814 1	Central	29	13	14	13	0,16
150	310 2006 814 1	Central	29	13	14	13	0,10



## Cylindrical shank 20 mm

1 – 6 mm

L1	Part.No.	Coolant	L2	D1	D2	AF	kg
100	310 1006 820 1	Central	45	13	20	13	0,17
150	310 2006 820 1	Central	67	13	20	19	0,30



# Collets and Accessories



# Collets

## Collet with peripheral cooling.

Additional cooling and rinsing effect. Increases the safety of processing.

1 – 6 mm

D	Part.No.	Coolant	kg
1,0	136 0601 000 0	Periphery	0,02
2,0	136 0602 000 0	Periphery	0,02
3,0	136 0603 000 0	Periphery	0,02
4,0	136 0604 000 0	Periphery	0,02
5,0	136 0605 000 0	Periphery	0,02
6,0	136 0606 000 0	Periphery	0,02



## Collet for tools with internal coolant.

100% leak proof up to 100 bar coolant pressure.

1 – 6 mm

D	Part.No.	Coolant	kg
1,0	136 0601 000 T	Central	0,02
2,0	136 0602 000 T	Central	0,02
3,0	136 0603 000 T	Central	0,02
4,0	136 0604 000 T	Central	0,02
5,0	136 0605 000 T	Central	0,02
6,0	136 0606 000 T	Central	0,02



\* Special size and inch diameter on request

# Accessories

## Torque Key

3,0 - 5,4 Nm

## Part.No.

139 0005 900 0



Pull Stud	Part.No.	Thread	through-hole	Angle	Neck-Ø	kg
SK30	138 0004 230 0	M12	Ø4	15°	9	0,03
BT30	138 0004 430 0	M12	Ø4	45°	8	0,04
BT40	138 0004 440 0	M16	Ø4	45°	10	0,04



# Balancing Screws

## Balancing Screws- Set, incl. case, key, difference-table and 180 pieces of fine-balancing-screws

Universal use, fits in all brands. 9 different screws in fine graduation. 20 screws each size, including Torx key. Different colours for visual identification. Precise balancing together with the clamped tool. Easy handling with Torx. Supplied with Torx ISR15 screwdriver. No need for screw locking. The balancing machine gives position and weight. Multiple use.

Typ	Part.No.
M6x4,0-8,0	139 4006 000 0



### Balancing Screws

Typ	Part.No.	Amount	Colour
M6x4,0	139 4006 040 0	20	black
M6x4,5	139 4006 045 0	20	silver
M6x5,0	139 4006 050 0	20	red
M6x5,2	139 4006 052 0	20	yellow
M6x6,0	139 4006 060 0	20	black
M6x6,5	139 4006 065 0	20	silver
M6x7,0	139 4006 070 0	20	red
M6x7,2	139 4006 072 0	20	yellow
M6x8,0	139 4006 080 0	20	black

# Accessories HSK

## Coolant tubes

DIN 69893 (HSK)	Part. No
Coolant tube HSK-A50	139 0002 650 0
Coolant tube HSK-A63	139 0002 663 0
Coolant tube HSK-A80	139 0002 680 0
Coolant tube HSK-A100	139 0002 610 0



## Key with T-handle

	Part. No
for Coolant tube HSK-A50	139 0020 650 0
for Coolant tube HSK-A63	139 0020 663 0
für for Coolant tube HSK-A80	139 0020 680 0
for Coolant tuber HSK-A100	139 0020 610 0



# Mountingsystem

flexible, vertical/horizontal, locked



Mounting System- Base Unit	Part.No.
	730 1000 000 0



Adaptor	Part.No.
<b>ISO 7388-1 + ISO7388-2</b>	
SK30 + BT30	730 1000 230 0
SK40 + BT40	730 1000 240 0
SK50 + BT50	730 1000 250 0
<b>DIN 69893</b>	
HSK50	730 1000 650 0
HSK63	730 1000 663 0
HSK80	730 1000 680 0
HSK100	730 1000 610 0
<b>ISO 26623-1</b>	
PSC50	730 1000 9C5 0
PSC63	730 1000 9C6 0
PSC80	730 1000 9C8 0

